



**Third B.P.Th. (2012) Examination, Summer 2016**  
**COMMUNITY HEALTH & SOCIOLOGY**

Total Duration : Section A + B = 3 Hours

Total Marks : 80

SECTION — A & SECTION — B

- Instructions :**
- 1) Use **blue/black** ball point pen only.
  - 2) Do not write anything on the **blank portion of the question paper**. If written anything, such type of act will be considered as an attempt to resort to unfair means.
  - 3) **All questions are compulsory.**
  - 4) The number to the **right** indicates **full** marks.
  - 5) Draw diagrams **wherever** necessary.
  - 6) Distribution of syllabus in Question Paper is only meant to cover entire syllabus within the stipulated frame. The Question paper pattern is a mere guideline. Questions can be asked from any paper's syllabus into any question paper. Students cannot claim that the Question is out of syllabus. As it is only for the placement sake, the distribution has been done.
  - 7) Use a common answerbook for **all** sections.

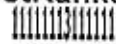
SECTION A  
(Community Health)

(50 Marks)

1. Short answer question (any five out of six) : (5x7=35)
  - a) Population Pyramid and its Interpretation.
  - b) Pulse Polio Immunization.
  - c) Growth and Development charts.
  - d) Factories Act.
  - e) Severe Acute Malnutrition (SAM) and its prevention.
  - f) Diagnosis of TB and its categorization under RNTCP.
2. Long answer question (any one out of two) : (1 x1 5=15)
  - a) Define Low Birth Weight. Enumerate its causes. Describe various measures for its prevention.
  - b) Enumerate various risk factors for Diabetes. Explain the strategies for its prevention.

P.T.O.

51314



SECTION — B  
(Sociology)

(30 Marks)

3. Short answer\_ question (**any six** out of seven) :

(6x5=30)

- a) Types of families - their Merits and Demerits.
- b) Cultural factors influencing health and disease.
- c) Doctor-patient relationship.
- d) Problems of the aged and their Security measures.
- e) Social norms, customs and their impact on Health.
- f) Health and Social empowerment schemes for the vulnerable population.
- g) Child Guidance Clinics.



51 31 4

**Third B.P.T.H. (2012) Examination, Summer 2017**  
**COMMUNITY HEALTH AND SOCIOLOGY**

Total Duration : 3 Hours

Total- Marks : 80

SECTION — A and SECTION — B

- Instructions :**
- 1) Use **blue/black** ball point pen only.
  - 2) **Do not** write anything on the **blank portion of the question paper**. If written anything, such type of act will be considered as an attempt to resort to unfair means.
  - 3) **All** questions are **compulsory**.
  - 4) The number to the **right** indicates **full** marks.
  - 5) Draw diagrams **wherever** necessary.
  - 6) Distribution of syllabus in Question Paper is only meant to cover entire syllabus within the stipulated frame. The Question paper pattern is a mere guideline. Questions can be asked from any paper's syllabus into any question paper. Students cannot claim that the Question is out of syllabus. As it is only for the placement sake, the distribution has been done.
  - 7) Use a common answerbook for **all** sections.

SECTION — A (50 Marks)  
(SAQ)

(Community Health)

1. Short answer question (any five out of six) : (5x7=35)
  - a) Demographic cycle.
  - b) Prevention of Obesity.
  - c) Infant and Young Child Nutrition (IYCN).
  - d) Classification of Occupational Diseases.
  - e) Antenatal care.
  - f) Methods for purification of water at domestic level.
2. Long answer question (any one out of two) : (1 x1 5=15)
  - a) Define primary health care. Enumerate its elements. Explain the principles of Primary Health Care.
  - b) Define Maternal Mortality Rate. What are the causes of Maternal Mortality in India ? Explain the measures to reduce the same.

P.T.O.

51314



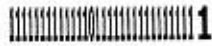
**SECTION B (30 Marks)**  
**(LAO)**  
**(Sociology)**

3. Short answer question (**any six** out of seven) :

(6x5=30)

- a) Health Behaviour Patterns.
  - b) Functions of Medico-Social worker.
  - c) Human Development Index.
  - d) Socio-economic status measurement scales.
  - e) Social Discrimination and its influence on Health.
  - f) Types of families.
  - g) Social Indicators of Community Health.
-





**Third B.P.Th. (2012) Examination, Winter 2017**  
**COMMUNITY HEALTH AND SOCIOLOGY**

Total Duration : Section A + B = 3 Hours

Total Marks : 80

**SECTION — A & SECTION — B**

- Instructions :**
- 1) Use **blue/black** ball point pen only.
  - 2) **Do not** write anything on the **blank portion of the question paper**. If written anything, such type of act will be considered as an attempt to resort to unfair means.
  - 3) **All** questions are **compulsory**.
  - 4) The number to the **right** indicates **full** marks.
  - 5) Draw diagrams **wherever** necessary.
  - 6) Distribution of syllabus in Question Paper is only meant to cover entire syllabus within the stipulated frame. The Question paper pattern is a mere guideline. Questions can be asked from any paper's syllabus into any question paper. Students cannot claim that the Question is out of syllabus. As it is only for the placement sake, the distribution has been done.
  - 7) Use a common answerbook for **all** Sections.

**SECTION — A (50 Marks)**  
**(Community Health)**

1. Short answer question (**any five** out of six) : **(5x7=35)**
  - a) Salient features of National Mental Health Program.
  - b) IMNCI(Integrated Management of Neonatal and Childhood Illness).
  - c) Uses of Growth Chart.
  - d) Features of Primary Health Care System.
  - e) Household purification of water.
  - f) Farmer's lung.
  
2. Long answer question (**any one** out of two) : **(1 x15=15)**
  - a) Define and classify Hypertension. Explain the risk factors of hypertension and discuss the measures for its prevention and control.
  - b) Define Health. Enumerate various indicators of health. Explain the difference between Health and Disease oriented approach.

P.T.O.

51314

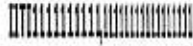


**SECTION - B (30 Marks)**  
**(Sociology)**

3. Short answer question (any six out of seven) :

**(6x5=30)**

- a) Drug abuse - Prevention and Control
  - b) Social pathology
  - c) Counselling in Health and Disease
  - d) Types of families
  - e) Consumer Protection Act
  - f) Problems of street children
  - g) Social Support Systems and Institutions.
-



51 31 4

**Third B.P.Th. (2012) Examination, Summer 2018**  
**COMMUNITY HEALTH AND SOCIOLOGY**

Total Duration : 3 Hours

Total Marks : 80

SECTION — A & SECTION — B

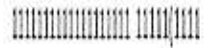
- Instructions :**
- 1) Use **blue/black** ball point pen only.
  - 2) **Do not** write anything on the **blank portion of the question paper**. If written anything, such type of act will be considered as an attempt to resort to unfair means.
  - 3) **All** questions are **compulsory**.
  - 4) The number to the **right** indicates **full** marks.
  - 5) Draw diagrams **wherever** necessary.
  - 6) Distribution of syllabus in Question Paper is only meant to cover entire syllabus within the stipulated frame. The Question paper pattern is a mere guideline. Questions can be asked from any paper's syllabus into any question paper. Students cannot claim that the Question is out of syllabus. As it is only for the placement sake, the distribution has been done.
  - 7) Use a common answerbook for **all** Sections.

SECTION — A **SAO (50 Marks)**  
**(COMMUNITY HEALTH)**

1. Short answer question (**any five** out of six) **(5x7=35)**
  - a) Prevention of road -traffic accidents
  - b) Demographic cycle
  - c) Integrated vector control
  - d) Preventive Interventions for Maternal and Child Health during Ante-natal period
  - e) DALY (Disability Adjusted Life Years)
  - f) Benefits for workers under Factories Act.
  
2. Long answer question (**any one** out of two) : **(1x15=15)**
  - a) Define primary health care. Enumerate elements of primary health care. Discuss the principles of primary health care with suitable examples.
  - b) Enumerate nutritional problems in India. Discuss the objectives, scope and activities under the ICDS. (Integrated Child Development Scheme).

P.T.O.

51314



SECTION – B LAO (30 Marks)  
(SOCIOLOGY)

3. Short answer question (any six out of seven) :

(6x5=30)

- a) Problem Families
  - b) Effects of urbanization on community
  - c) Social structure of a hospital
  - d) Cultural factors in health and disease
  - e) Social survey
  - f) Family life cycle
  - g) Fertility Indices.
- 

www.FirstRanker.com





**Third B.P.Th. (2012) Examination, Winter 2018**  
**COMMUNITY HEALTH AND SOCIOLOGY**

Total Duration : 3 Hours

Total Marks : 80

SECTION — A & SECTION — B

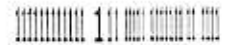
- Instructions :**
- 1) Use **blue/black** ball point pen only.
  - 2) **Do not** write anything on the **blank portion of the question paper**. If written anything, such type of act will be considered as an attempt to **resort to unfair means**.
  - 3) **All** questions are **compulsory**.
  - 4) The number to the **right** indicates **full** marks.
  - 5) Draw diagrams **wherever** necessary.
  - 6) Distribution of syllabus in Question Paper is only meant to cover entire syllabus within the stipulated frame. The Question paper pattern is a mere guideline. Questions can be asked from any paper's syllabus into any question paper. Students cannot claim that the Question is out of syllabus. As it is only for the placement sake, the distribution has been done.
  - 7) Use a common answerbook for **all** Sections.

SECTION — "A" (50 Marks)  
(Community Health)

1. Short answer question (any five out of six) : (5x7=35)
  - a) High risk approach in antenatal care.
  - b) Uses of epidemiology.
  - c) Obesity indices.
  - d) Integrated Child Development Services (ICDS) Programme.
  - e) Drug addiction.
  - f) Universal safety precautions.
  
2. Long answer question (any one out of two) : (1x15=15)
  - a) Define primary health care. Discuss the health care delivery system in rural india.
  - b) Discuss the National immunisation schedule given by Government of India. Write a note on adverse events following immunisation.

P.T.O.

51314



**SECTION - "B" (30 Marks)**  
**(Sociology)**

3. Short answer question (**any six** out of seven) :

**(6x5=30)**

- a) Role of a medical social worker.
  - b) Rehabilitation in Leprosy.
  - c) Role of family in health and disease.
  - d) Health problems of street children.
  - e) Social security measures.
  - f) Population explosion.
  - g) Social groups.
-